



# **Nedlands Challenge Series**

## **Open Invitational**

# **SAILING INSTRUCTIONS**

**Sunday 20 November 2022 and**  
**Sunday 5 February 2023**

Organising Authority: Nedlands Yacht Club (Inc.)

Version Control: Ver 1.0 – 09/11/2022

# **SAILING INSTRUCTIONS**

## **Introduction**

An open invitational yardstick regatta for off the beach dinghies and catamarans, keelboats, trailable cruisers, sportsboats and multihulls.

Each race day will have 2 races schedules. Results will be presented after each day of sailing.

## **1. ORGANISING AUTHORITY**

- 1.1. The Organising Authority is the Nedlands Yacht Club (Inc.) – NYC.
- 1.2. The NYC Regatta Committee is appointed “Race Committee”.
- 1.3. The “NYC Officer of The Day” (OOD) is the “Race Officer” and is the representative of the “Race Committee”.

## **2. RULES**

- 2.1. The Event will be governed by the Rules as defined in the *Racing Rules of Sailing (RRS)*, and by these Sailing Instructions.
- 2.2. The Australian Sailing Prescriptions and Special Regulations will apply.
- 2.3. These Sailing Instructions may change racing rules. Changes will appear in full below.
- 2.4. The Notation [DP] in a rule in the Sailing Instructions indicates that the penalty for a breach of that rule may, at the discretion of the protest committee, be less than disqualification.
- 2.5. The Notation [NP] in a rule in the Sailing Instructions indicate a breach of that rule will not be grounds for protest by a boat. This changes RRS 60.1(a).
- 2.6. The Australian Sailing Special Regulations Part 1, Section 2 to the level of Category 7 shall apply to Cruiser fleets.
- 2.7. The Australian Sailing Special Regulations Part 2, regulation 5.01 (Personal Flotation Devices) will be enforced for Dinghy and Off the Beach catamaran fleets.

## **3. NOTICES TO COMPETITORS**

- 3.1. Notices to competitors will be posted on the Race Control notice board located at NYC Sail Training Centre.

## **4. CHANGES TO SAILING INSTRUCTIONS**

- 4.1. Any changes to the sailing instructions will be posted on the Race Control notice board located at the NYC Sail Training Centre no later than 30 minutes before the first warning signal for the first start sequence of the day.
- 4.2. Code flag “L” will be flown ashore and on water to indicate a change to Sailing Instructions. Boats that come to the starting area directly from other clubs may hail the Start Boat to be informed of the changes.

## 5. SIGNALS MADE ASHORE

- 5.1. Signals made ashore will be displayed from the yardarm adjacent to the NYC Control tower.
- 5.2. When flag AP is displayed ashore, A warning signal will be made not less than 5 minutes after the end of a postponement period. This changes “Postponement Signals” in “Race Signals”

## 6. FLEETS AND STARTING PENNANTS

- 6.1. The below table shows the Fleets and pennants they will start under.

<b>FLEET</b>	<b>PENNANT</b>
Cruiser Division 1	Naval Numeral One (1)
Cruiser Division 2	Naval Numeral Two (2)
Cruiser Division 3 & 4	Naval Numeral Four (4)
Hobie 16	Black Hobie class emblem on white
Open Dinghy	Black 125 class emblem on white
Juniors	Blue Flying 11 emblem on white
Open Cats	Black Tornado class emblem on white

- 6.2. Additional fleets may be added on the day and Fleets may be combined.
- 6.3. The minimum number of boats required for a fleet is at the discretion of the OOD.

## 7. SCHEDULE

- 7.1. A Competitors Briefing will be held at 1215 on Sunday 20 November 2022 and Sunday 5 February 2023. Other Briefings will be held at the discretion of the Race Committee. All Briefings will be held on the verandah of the NYC main clubhouse.
- 7.2. The series will consist of two race days, 20 November 2022 and 5 February 2023.
- 7.3. Each race day will consist of 2 races for each fleet. The number of races can be reduced at the discretion of the Race Committee.
- 7.4. All races on a day will count to final score on that day. This changes RRS A2.1.
- 7.5. The start sequence for race 1 on each day will commence at 13:30.
- 7.6. The starting order of fleets for race 1 will be determined on the day. The starting order of subsequent races will vary based on when fleets complete their previous race.
- 7.7. Subsequent race starts for each fleet will commence as soon as possible after the completion of that fleet’s previous race.
- 7.8. Fleets may be started together.

## 8. RACING AREA

- 8.1. The races will be sailed on Melville Water West of the Swan River, adjacent to the Nedlands Yacht Club shoreline as depicted in Appendix B - Race Course Area.

## **9. COURSES**

- 9.1. Courses are defined and illustrated in Appendix A.
- 9.2. The course to be sailed for each race will be indicated by the display of the numeral pennant representing the course number at least 5 minutes prior to the warning signal. The numeral pennant will be displayed on the NYC Start Boat yardarm.
- 9.3. Courses will not be shortened. This changes Rule 32.
- 9.4. Legs of the course will not be changed after the preparatory signal. This changes Rule 33.
- 9.5. Having started, a boat shall not sail through the start line while racing. A boat which breaks this rule will be penalised three places, without a hearing [NP]. This changes Rule 63.1

## **10. MARKS**

- 10.1. Buoy 1 will be a large orange pyramid buoy. Buoy 2 will be a large yellow pyramid buoy. Buoys 3 and 4 will be large red pyramid buoys. The leeward gate will consist of two yellow truncated cone buoys. Buoy 6 will be a smaller green pyramid buoy.
- 10.2. Buoys 1, 2 and 3 will have associated offset rounding marks. The offset rounding marks will be orange flags mounted above small white floats.
- 10.3. Dalkeith buoy is a river style post mark located approximately halfway between the Nedlands jetty and the end of the Nedlands finish line.
- 10.4. The outer end of the Start Line will be a small red pyramid buoy
- 10.5. The finish line marks include the black striped buoy and the green buoy immediately East of the NYC shoreline.

## **11. NOTICE OF INTENT TO RACE AND RETIREMENT**

- 11.1. Before leaving the shore, boats shall complete the “sign-on” sheet which will be available at the NYC main clubhouse at least one hour before the warning signal [DP][NP].
- 11.2. A boat that is unable to comply with 11.1 as it has come direct to the starting area from another club by water and is registered to compete via the on-line registration form, may hail and be acknowledged by the NYC Start Boat before its scheduled start time [DP][NP].
- 11.3. A boat that retires from a race shall sign the retirement notification sheet within the NYC Sail Training Centre as soon as possible.
- 11.4. A boat that is unable to comply with 11.3 as it is returning directly to another club by water must hail the NYC Start Boat or notify the Race Committee by phone (9386 5496) as soon as practicable.

## 12. THE START

- 12.1. Races will be started using RRS Rule 26 amended as follows to allow for a warning signal to be made 3 minutes before the starting signal. This changes Rule 26

Minutes before starting signal	Visual Signal	Sound Signal
3	Class Flag raised	One
2	Preparatory Flag raised (as per Rule 26)	One
1	Preparatory Flag lowered	One long
0	Class Flag lowered	One

- 12.2. The Start line will be between a staff displaying an orange flag on the NYC Start Boat and the outer start line buoy. The NYC Start Boat is the inner mark.
- 12.3. A barging buoy may be laid near the NYC Start Boat and is to be considered an extension of the NYC Start Boat.
- 12.4. Boats whose warning signal has not been made shall avoid the starting area during the starting sequence of other races [DP][NP].

## 13. GENERAL RECALLS

- 13.1. Recalled fleets will be re-entered into the starting sequence at the discretion of the starter. This changes RSS Rule 29.2.

## 14. THE FINISH

- 14.1. All finishes will use the NYC finish line
- 14.2. The finish line is between the permanent black striped outer buoy and the red triangle on the control tower. The green buoy indicates the inner end of the line and is placed approximately upon the finishing line.
- 14.3. Having finished no boat shall sail back through the finish line. A boat which breaks this rule will be penalised three places, without a hearing [NP]. This changes Rule 63.1,
- 14.4. Boats that have finished a race shall stay clear of boats still racing [DP][NP].

## 15. PENALTY SYSTEM

- 15.1. For all fleets, Rules 44.1 and 44.2 (taking a penalty) are amended so that only one turn, including one tack and one jibe, are required.

## 16. TIME LIMITS

- 16.1. A time limit for each race, for each fleet is set as 20 minutes after the finish time of the first boat for that fleet.
- 16.2. Boats that fail to complete the course within the time limit will be awarded a DNF. This changes Rules 35, A4 and A5.

## **17. PROTESTS AND REQUESTS FOR REDRESS**

- 17.1. At the end of each race, any boat intending to protest shall sail to the non start line side of the NYC Start Boat and verbally notify the Race Committee of the boat being protested and the nature of the incident.
- 17.2. Protests and Requests for Redress shall then be written on the appropriate forms which are available from the OOD's office and delivered to the OOD prior to the elapse of 30 minutes after the last boat of all the fleets has finished for the last race of the day.
- 17.3. Hearings, if they are to proceed following ARBITRATION (see below), will be held at the earliest possible opportunity at the discretion of the OOD.
- 17.4. Parents of interested parties from the junior fleet may accompany their children to the hearing, or mediation, as observers only.

## **18. ARBITRATION**

- 18.1. Arbitration will be in accordance with *RRS* Appendix T – Arbitration.

## **19. SCORING**

- 19.1. The Low Point Scoring system, *RRS* Appendix A4, will apply
- 19.2. *RRS* A5.3 applies for fleets with races held on both dates.
- 19.3. For the clarification of these instructions, a boat is deemed to have “come to the starting area” if it has signed on as defined under Notice of Intent to Race.

## **20. SAFETY AND RESPONSIBILITY**

- 20.1. Attention is drawn to the *RRS*, Part 1, Fundamental Rule 3, “Decision to Race”, which states, “The responsibility for a boat’s decision to participate in a race or to continue racing is hers alone.”
- 20.2. The Club and its officials are not responsible for the seaworthiness of boats or for the sufficiency or adequacy of their equipment.
- 20.3. Boats designated in the Cruiser divisions must comply to a level of Category 7 of the Australian Sailing Special Regulations Part 1, Section 2.
- 20.4. As per the Australian Sailing Special Regulations Part 2, regulation 5.01, Personal Flotation Devices must be worn by all Dinghy and Off the Beach catamaran crews. Further, when Flag “Y” is flown either ashore or on the start boat, then all competitors must wear PFD’s.

## **21. ADVERTISING**

- 21.1. Advertising will be restricted to ISAF Regulation 20 Advertising Code

## **22. SUPPORT BOATS**

- 22.1. Support boats will display a green over white diagonal flag.
- 22.2. Support boats and crew will be supplied by NYC under its standard operating procedures.
- 22.3. Support boats have right of way at all times. Redress does not apply to a boat disadvantaged by a support boat performing rescue operations.

## **23. PRIZES**

23.1. Prizes will be awarded at the discretion of NYC.

## **24. DISCLAIMER OF LIABILITY**

24.1. All those taking any part in the event do so at their own risk. The Organising Authority, its associates and appointees accept no responsibility for any loss, damage, injury, death or inconvenience incurred, howsoever caused.

## **25. INSURANCE**

25.1. Each participating boat shall be insured with current third party personal liability insurance cover with a minimum cover of AU\$10,000,000 per incident.

## Appendix A – Courses

### A.1 Open Cat

Course #1 - S.W.		Course #2 - East		Course #3 - N.W.	
Start SW direction		Start E direction		Start NW direction	
Buoy 3	P	Buoy 3	P	Buoy 3	P
Buoy 3 offset	P	Buoy 3 offset	P	Buoy 3 offset	P
Gate		Gate		Gate	
Buoy 3	P	Buoy 3	P	Buoy 3	P
Buoy 3 offset	P	Buoy 3 offset	P	Buoy 3 offset	P
Gate		Gate		Gate	
Buoy 3	P	Buoy 3	P	Buoy 3	P
Buoy 3 offset	P	Buoy 3 offset	P	Buoy 3 offset	P
Gate		Gate		Dalkeith	P
Dalkeith	P	Buoy 6	S	Club Finish Line	
Club Finish Line		Club Finish Line			

### A.2 Hobie 16

Course #1 - S.W.		Course #2 - East		Course #3 - N.W.	
Start SW direction		Start E direction		Start NW direction	
Buoy 2	P	Buoy 2	P	Buoy 2	P
Buoy 2 offset	P	Buoy 2 offset	P	Buoy 2 offset	P
Gate		Gate		Gate	
Buoy 2	P	Buoy 2	P	Buoy 2	P
Buoy 2 offset	P	Buoy 2 offset	P	Buoy 2 offset	P
Gate		Gate		Gate	
Buoy 2	P	Buoy 2	P	Buoy 2	P
Buoy 2 offset	P	Buoy 2 offset	P	Buoy 2 offset	P
Gate		Gate		Dalkeith	P
Dalkeith	P	Buoy 6	S	Club Finish Line	
Club Finish Line		Club Finish Line			



### A.3 Cruiser Div 1

Course #1 - S.W.		Course #2 - East		Course #3 - N.W.	
Start SW direction		Start E direction		Start NW direction	
Buoy 3	P	Buoy 3	P	Buoy 3	P
Buoy 3 offset	P	Buoy 3 offset	P	Buoy 3 offset	P
Gate		Gate		Gate	
Buoy 3	P	Buoy 3	P	Buoy 3	P
Buoy 3 offset	P	Buoy 3 offset	P	Buoy 3 offset	P
Gate		Gate		Dalkeith	P
Dalkeith	P	Buoy 6	S	Club Finish Line	
Club Finish Line		Club Finish Line			

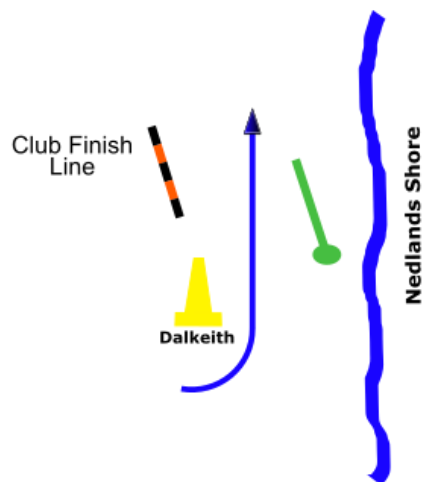
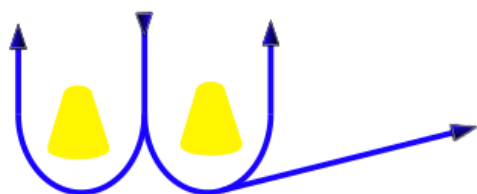
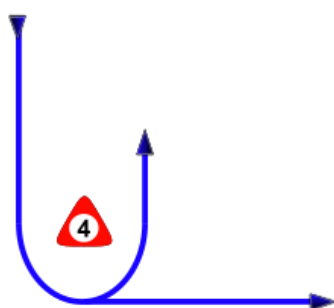
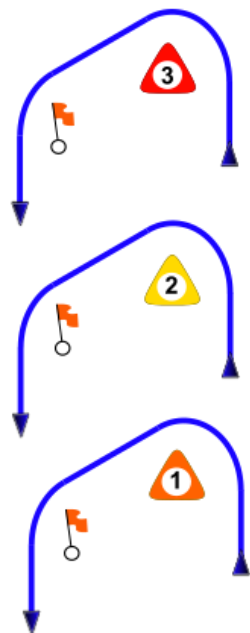
### A.4 Cruiser Div 2

Course #1 - S.W.		Course #2 - East		Course #3 - N.W.	
Start SW direction		Start E direction		Start NW direction	
Buoy 2	P	Buoy 2	P	Buoy 2	P
Buoy 2 offset	P	Buoy 2 offset	P	Buoy 2 offset	P
Gate		Gate		Gate	
Buoy 2	P	Buoy 2	P	Buoy 2	P
Buoy 2 offset	P	Buoy 2 offset	P	Buoy 2 offset	P
Gate		Gate		Dalkeith	P
Dalkeith	P	Buoy 6	S	Club Finish Line	
Club Finish Line		Club Finish Line			

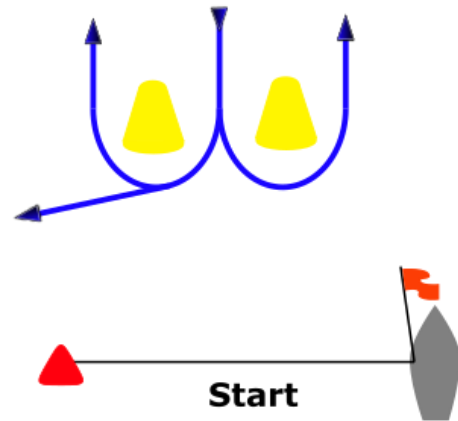
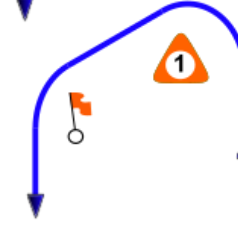
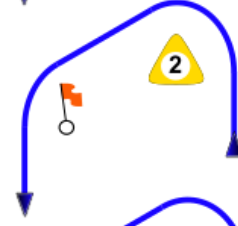
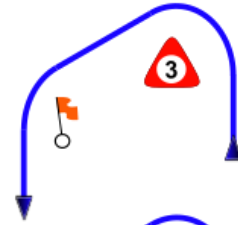
### A.5 Cruiser Div 3/4, Open Dinghy, National 125

Course #1 - S.W.		Course #2 - East		Course #3 - N.W.	
Start SW direction		Start E direction		Start NW direction	
Buoy 1	P	Buoy 1	P	Buoy 1	P
Buoy 1 offset	P	Buoy 1 offset	P	Buoy 1 offset	P
Buoy 4	P	Buoy 4	P	Buoy 4	P
Buoy 1	P	Buoy 1	P	Buoy 1	P
Buoy 1 offset	P	Buoy 1 offset	P	Buoy 1 offset	P
Buoy 4	P	Buoy 4	P	Buoy 4	P
Buoy 1	P	Buoy 1	P	Buoy 1	P
Buoy 1 offset	P	Buoy 1 offset	P	Buoy 1 offset	P
Buoy 4	P	Gate		Dalkeith	P
Dalkeith	P	Buoy 6	S	Club Finish Line	
Club Finish Line		Club Finish Line			

# South Westerly Course 1



# Easterly Course 2



Club Finish Line



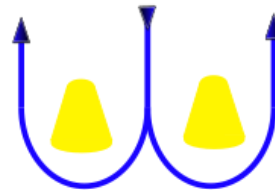
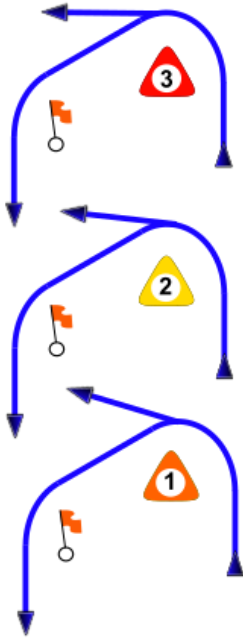
Nedlands Shore

Start



# North Westerly Course 3

Nedlands Shore



# Appendix B – Race Course Area

